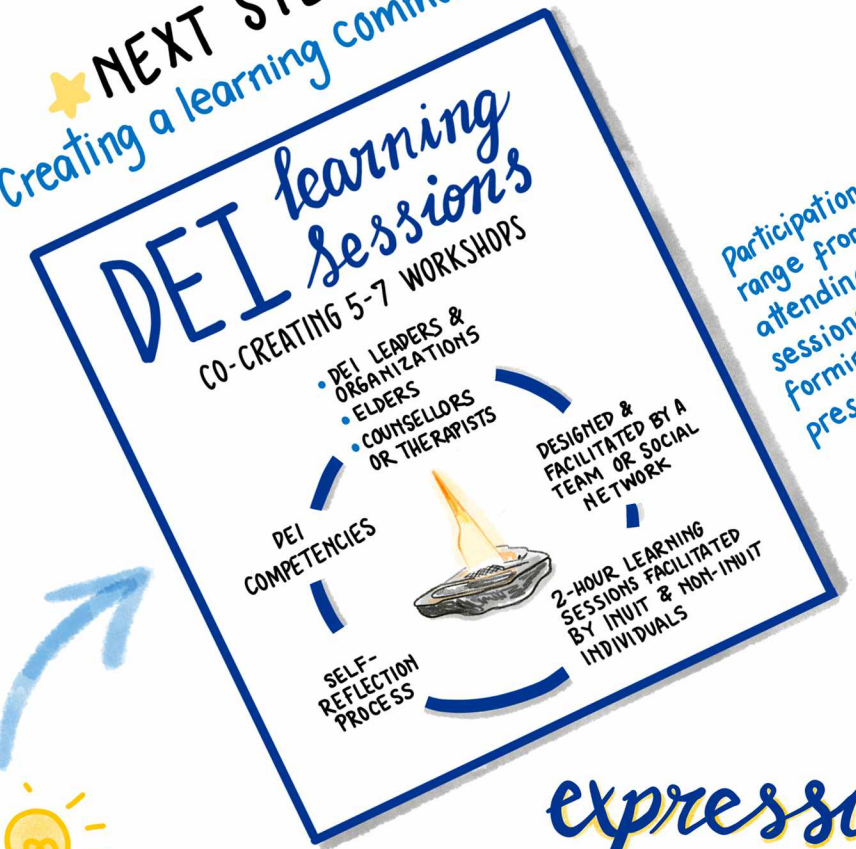




# Starting the Conversation

DIVERSITY, EQUITY & INCLUSION (DEI)

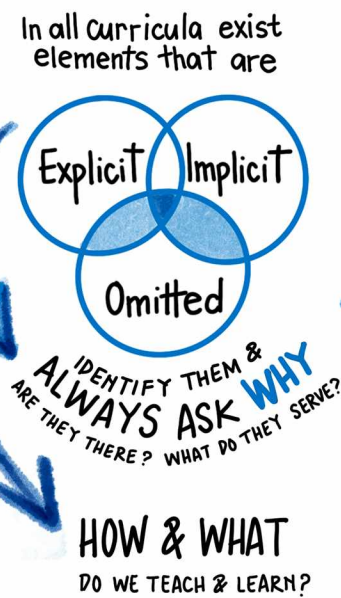
**NEXT STEPS!**   
Creating a learning community.



Participation can range from attending the sessions to forming/joining a presenting team.

**COMING TOGETHER WITH**   
open minds & open hearts   
A process & commitment focused on   
**Self-Reflection**   
**AND**   
**Relationship-Building**   
Start with self-knowledge & be yourself

**WHO & WHAT** do we engage with on a daily basis?   
How does it affect our view of the world?   
**CREATE NEW PATHS TO Understanding**   
TRANSFORM INTO OPPORTUNITIES any feelings of shame, fear or being stuck, that you may encounter along the way



WHO IS INCLUDED? WHO IS LEFT OUT?   
WHAT ASSUMPTIONS DO WE HOLD?   
WHAT CAN WE DO DIFFERENT?

**expressions of interest**   
IDEAS FOR WORKSHOPS: A FEW EXAMPLES

**Ilinniatitsiguti**   
Inuit-centred tools & approaches



We are co-creating a new curriculum that best supports **INUGUINIQ**   
Develop the human as a whole in direct relationship to the environment & community.

- PEDAGOGY OF THE LAND **Sila**   
OUTDOOR, THE ENVIRONMENT, THE UNIVERSE
- THE OFFICIAL MIND OF CANADIAN COLONIALISM   
DECOLONIZING LESSON PLANS
- TRAUMA & RESILIENCE-INFORMED EDUCATION
- INUIT MATHEMATICS
- MULTI-LOCALATIONAL TEACHING
- INCLUSIVE VOCABULARY   
WORDS MATTER & CAN CAUSE HARM

RESOURCES AT: [NUNAVIK-ICE.COM](http://NUNAVIK-ICE.COM)

**INTENTIONAL Inquiry**   
• To question stereotypes & internalized biases.   
• To start to change the skewed perceptions we might hold.   
• To create safe spaces & trust.

**Curriculum**   
A PATH • A ROAD MAP • A SUM OF EXPERIENCES   
That happen when we open up to learning processes

