

PA3-3 Counting Backwards

To get from 12 to 16, Ethan adds 4.

$$\begin{array}{r} \textcircled{+4} \\ 12 \quad 16 \end{array}$$

To get from 16 to 12, he subtracts 4.

$$\begin{array}{r} \textcircled{-4} \\ 16 \quad 12 \end{array}$$

1. Find the numbers to add or subtract.

a) $12 \textcircled{+2} 14$ and $14 \textcircled{-2} 12$

b) $11 \textcircled{\quad} 15$ and $15 \textcircled{\quad} 11$

c) $2 \textcircled{\quad} 5$ and $5 \textcircled{\quad} 2$

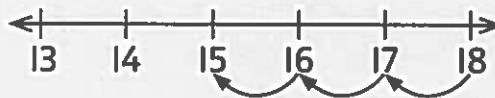
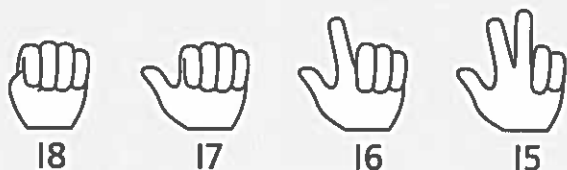
d) $10 \textcircled{\quad} 18$ and $18 \textcircled{\quad} 10$

e) $7 \textcircled{\quad} 14$ and $14 \textcircled{\quad} 7$

f) $9 \textcircled{\quad} 14$ and $14 \textcircled{\quad} 9$

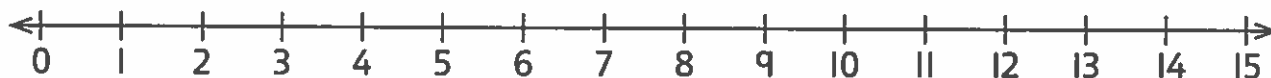
What number do you subtract from 18 to get 15?

Count backwards on your fingers to find out. A number line can help you count.



You have 3 fingers up, so 3 subtracted from 18 is 15.

2. What number must you subtract?



a) $7 \textcircled{-3} 4$

b) $6 \textcircled{\quad} 3$

c) $9 \textcircled{\quad} 7$

d) $5 \textcircled{\quad} 1$

e) $8 \textcircled{\quad} 4$

f) $10 \textcircled{\quad} 5$

g) $15 \textcircled{\quad} 11$

h) $13 \textcircled{\quad} 9$

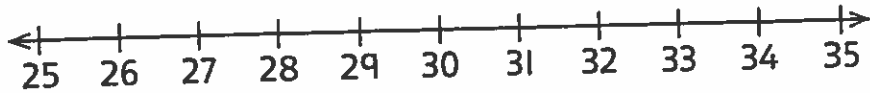
i) $14 \textcircled{\quad} 7$

j) $15 \textcircled{\quad} 10$

k) $14 \textcircled{\quad} 8$

l) $12 \textcircled{\quad} 9$

3. Find the gap between the numbers.



a) 32 $\overset{-4}{\circ}$ 28

b) 30 \circ 29

c) 32 \circ 27

d) 30 \circ 26

e) 28 \circ 25

f) 33 \circ 26

g) 29 \circ 26

h) 31 \circ 25

What number do you subtract from 17 to get 14? $17 - \square = 14$

Count backwards to find out.



17



16



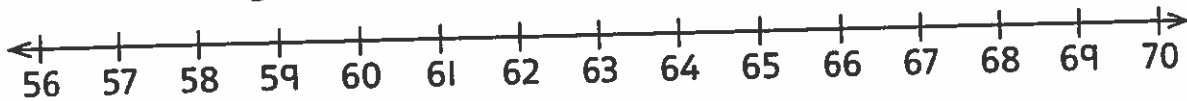
15



14

You have 3 fingers up, so $17 - \boxed{3} = 14$.

4. Find the missing number.

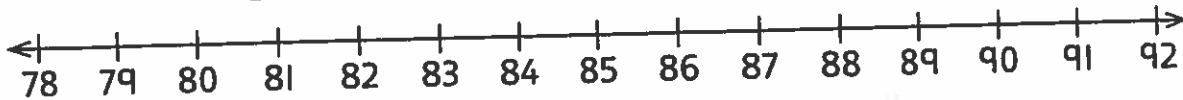


a) $63 - \boxed{4} = 59$ b) $67 - \square = 62$ c) $64 - \square = 60$ d) $64 - \square = 59$

e) $66 - \square = 56$ f) $69 - \square = 61$ g) $70 - \square = 60$ h) $65 - \square = 62$

$86 - 4$ is 82, so 82 is 4 less than 86.

5. Find the missing number.



a) 81 is 6 less than 87.

b) 83 is _____ less than 92.

c) 83 is _____ less than 88.

d) 79 is _____ less than 82.

e) 84 is _____ less than 92.

f) 78 is _____ less than 87.