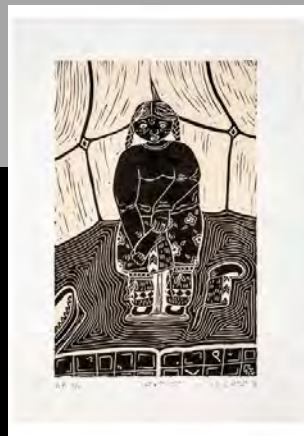


Maggie was born in 1981 in Kuujuaq and now lives in Inukjuak. She is the granddaughter of Henry Napartuk. She is a multidisciplinary artist who has explored metalwork, jewellery making, illustrations and graphic arts and linocut printmaking over the years. She has participated in several snow carving competitions at the Puvirnituq Snow Festival. Her artwork reveals her connection to the land and her passion for preserving Inuit traditions. She has been teaching and working with Inuit youth and emerging artists throughout Nunavik. Maggie's work is included in several public collections including the Montreal Museum of Fine Arts, the Avataq Cultural Institute and the *Fédération des coopératives du Nouveau-Québec*.



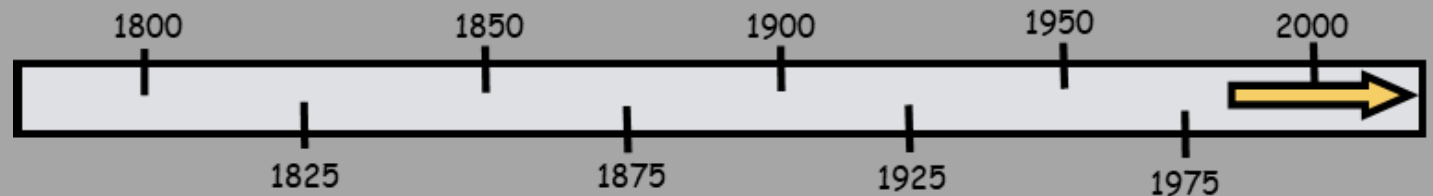
Maggie Napartuk



"Softening Kamik"
2016



"Home"
2016



Fun fact about the artist

Maggie's name is subtly included in almost every print she creates.



"snowflake"
2016